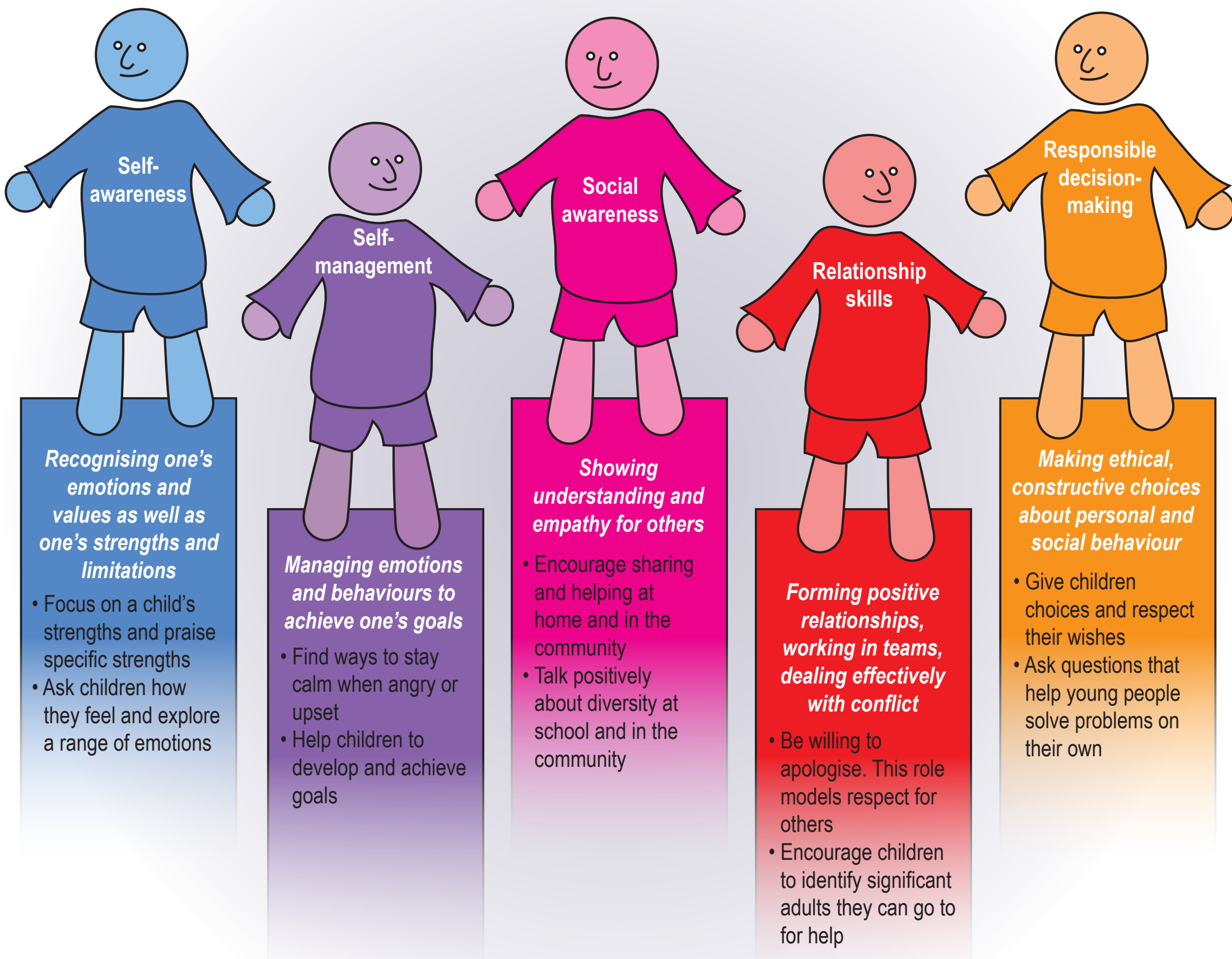




# Schools, Families and, Social and Emotional Learning

Schools and families have essential roles to play in promoting children's positive development and academic performance. When educators and parents work together as partners, they create important opportunities for children to develop social, emotional, and academic competencies. These skill sets are enhanced when they are mutually supported and reinforced at home and at school (Albright, Weissberg & Dusenber, 2011). Social and emotional learning (SEL) revolves around the five broad areas of competence depicted below.

## What can families do to reinforce SEL at home?



Adapted from: Fredericks L, Weissberg R, Resnick H, Patrikakou E & O'Brien MU, 2005, *Schools, Families, and Social and Emotional Learning – Ideas and Tools for Working with Parents and Families*. CASEL and Mid-Atlantic Regional Laboratory for Student Success.



Australian Government



Catholic Education Office  
Archdiocese of Melbourne